

# Jackson Soil and Water Conservation District

## Forage Plant Pocket Guide

2014



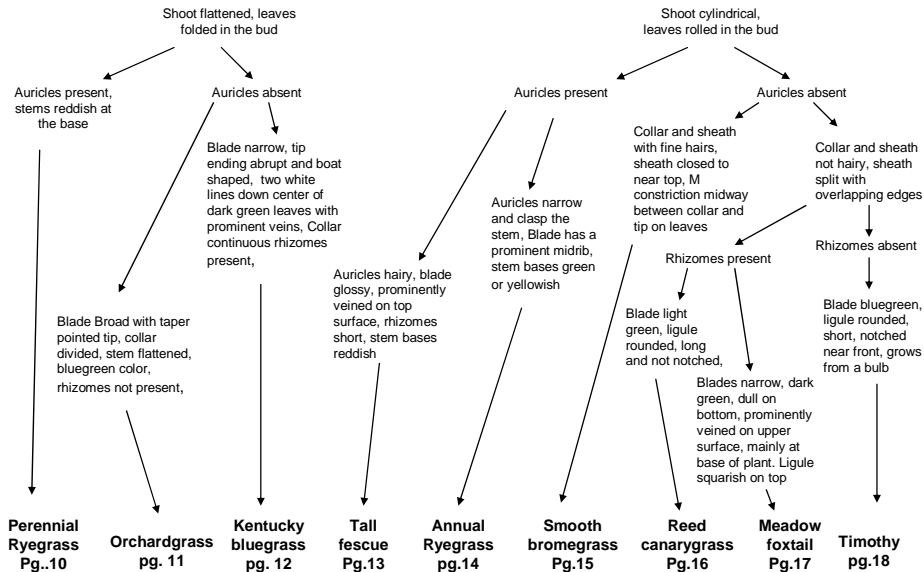
Compiled by  
Charlie Boyer

**About this guide:**

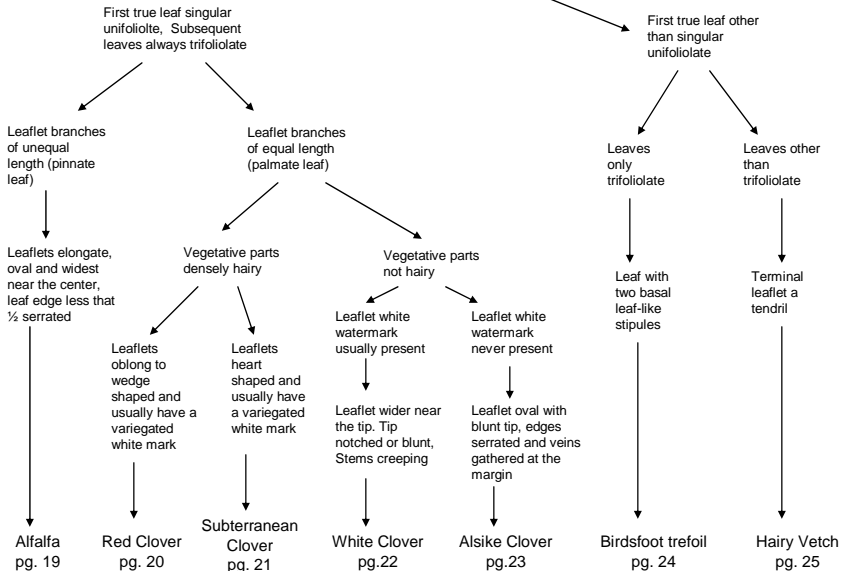
This guide was compiled for the Jackson Soil and Water Conservation District to be used as an educational tool for agriculturalists and other interested people to learn to identify the primary forage plants found in Jackson County, Oregon.

The information contained in this guide was taken from the NRCS Elsberry Plant Materials Center *Conservation Plants Pocket ID Guide*, the **Forage Information System** , hosted by Oregon State University and the *Grass and Legume Identification Keys* from University of Kentucky, College of Agriculture Cooperative Extension Service . We want to thank them for their work in providing the photos, drawings, and identification keys for this guide. Their information was reformatted or modified as necessary to fit our format but it is still their work.

## Cool-Season Forage Grass Identification Key

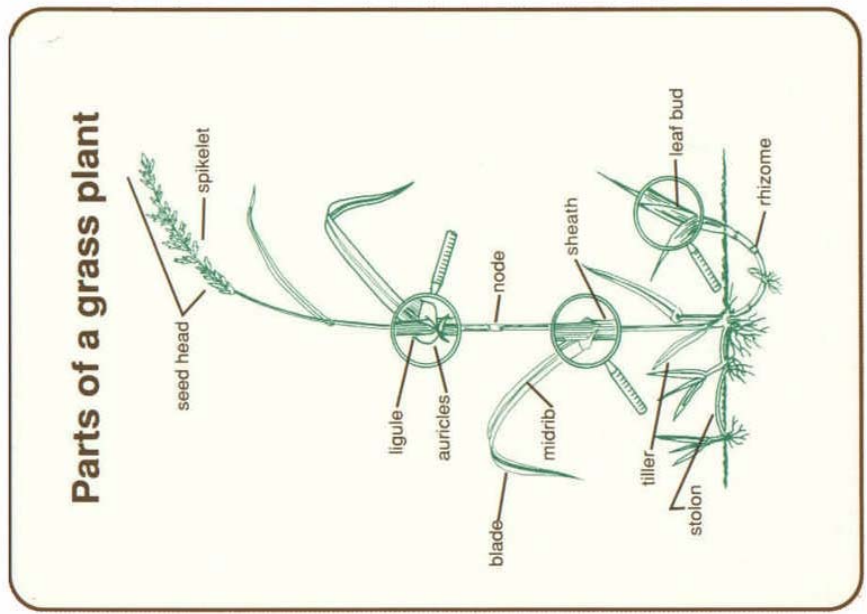


## Cool-Season Forage Legume Identification Key



# Conservation Plants

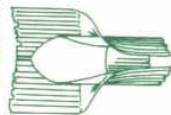
# plant parts



## Conservation Plants

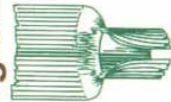
## plant parts

### Parts of a grass plant



**Ligule  
may be**

membranous



hairy

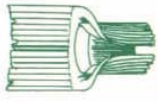


absent



**Auricles  
may be**

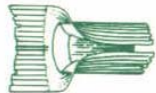
long-clawlike



short-stubby



absent



**Sheath  
may be**

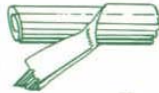
split



overlapping



closed



**Leaf bud  
may be**

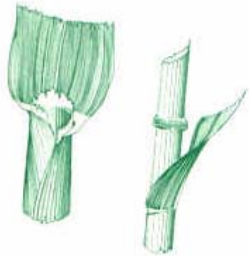
rolled in the bud



folded in the bud



Oats

*Avena sativa*

## Oats

### *Avena sativa*

Annual cereal grain Cool season  
Grows 2 to 4 feet tall

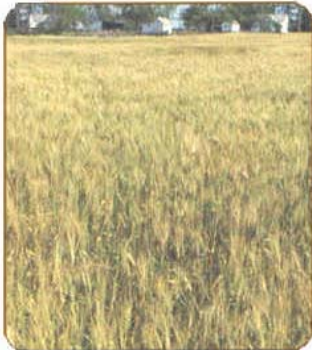
**Sheath:** Round, short, hairy,  
split with overlapping margins

**Blade:** Rolled in the bud shoot,  
1/4 to 1/2 inch wide, margins  
short, hairy

**Ligule:** Prominent, membra-  
nous, rounded and toothed

**Other:** Auricles absent

Wheat

*Triticum aestivum*

## Wheat *Triticum aestivum*

Annual cereal grain Grows 2 to 3 feet tall

**Sheath:** Round, smooth, split with overlapping margins

**Blade:** Rolled in the bud shoot, 1/4 to 1/2 inch wide, margins smooth

**Other:** Small auricles, mostly long, hairy



Cereal rye

*Secale cereale*

## Cereal rye *Secale cereale*

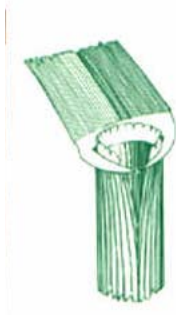
Annual cereal grain Grows 3 to 5 feet tall

**Sheath:** Round, smooth, split with overlapping margins

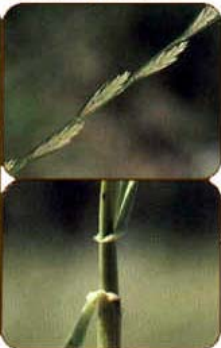
**Blade:** Rolled in the bud shoot, 1/2 to 1 inch wide, margins rough

**Ligule:** Small membranous, torn on the edges

**Other:** Small auricles without hairs



Perennial ryegrass

*Lolium perenne*

**Perennial ryegrass**  
*Lolium perenne*

Perennial (short lived) Cool season  
Bunch grass Grows 2 to 3 feet tall

**Sheath:** Flattened, smooth and open

**Blade:** Folded in the bud shoot and V-shaped, 1/8- inch wide, smooth and glossy below

**Ligule:** Small, membranous

**Seeds:** Awnless

**Stems:** Stems reddish on the bases

**Other:** Narrow, small auricles, don't clasp the stem

Orchardgrass

*Dactylis glomerata*

## Orchardgrass

### *Dactylis glomerata*

Perennial grass Cool season  
 Bunch grass Grows 2 to 4 feet  
 tall

**Sheath:** Flattened and open

**Blade:** Folded in bud shoot,  
 flat, at least 1/4-inch wide

**Ligule:** Large, membranous,  
 often split at maturity



Kentucky bluegrass

*Poa pratensis*

## Kentucky bluegrass *Poa pratensis*

Perennial grass Cool season  
Sod forming Grows 1 to 2 feet  
tall

**Sheath:** Somewhat flattened  
and open

**Blade:** Folded in bud shoot,  
1/8-inch wide, boat shaped tip  
and two white lines down center  
of leaf

**Ligule:** Small, membranous

Tall Fescue

*Festuca arundinacea***Tall fescue*****Festuca arundinacea* \***

Perennial grass Cool season  
Bunch grass; forms a weak sod  
Grows 2 to 3 feet tall

**Sheath:** Round, open, fitting loosely around the stem

**Blade:** Rolled in the bud shoot, smooth and shiny underneath, ridged on the upper surface

**Ligule:** Small membranous

**Other:** Very small auricles, not readily seen by the naked eye



Annual ryegrass

*Trifolium multiflorum*

## Annual ryegrass *Lolium multiflorum*

Annual Cool season Grows 1 to 2 feet tall

**Sheath:** Round, smooth and open

**Blade:** Rolled in the bud shoot, flat, 1/8-inch wide

**Ligule:** Small, membranous

**Seeds:** Awned

**Stems:** Green or yellowish at the bases

**Other:** Small auricles present, clasping the stem

Smooth bromegrass

*Bromus inermis*

## Smooth bromegrass *Bromus inermis* \*

Perennial grass Cool season Sod forming Grows 2 to 3 feet tall

**Sheath:** Round, closed near the top

**Blade:** Rolled in the bud shoot, pinched 'W' in leaf blade

**Ligule:** Small, membranous



Reed canarygrass

*Phalaris arundinacea*

**Reed canarygrass**  
*Phalaris arundinacea* \*  
 (native)

Perennial grass Cool season  
 Sod forming Grows 2 to 6  
 feet tall

**Sheath:** Round, open and  
 pale below ground

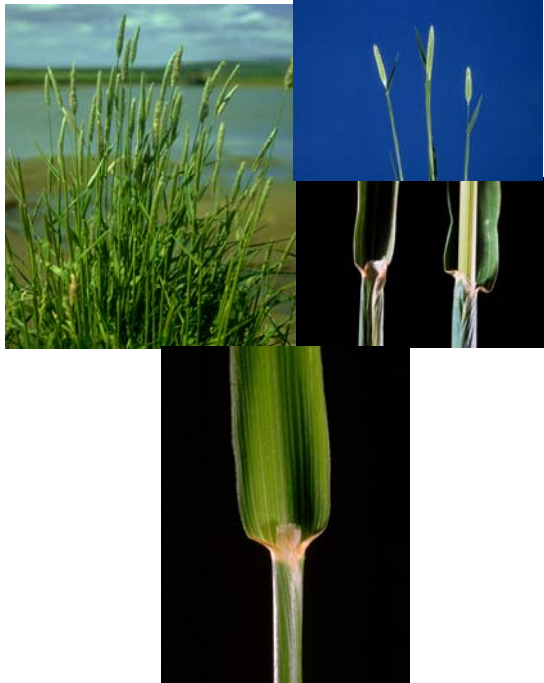
**Blade:** Rolled in the bud  
 shoot, flat, up to 1/2-inch  
 wide

**Ligule:** Large membranous  
 ligule, pointed, often de-  
 scribed as papery

**Other:** Large rhizomes,  
 greater than 1/8-inch diameter





**Meadow foxtail*****Alopecurus pratensis***

**Meadow foxtail**  
***Alopecurus pratensis***

A dark green early growing, cool-season bunch grass

**Sheath:** round open and rather loose looking.

**Blade:** Rolled in the bud, dark green and narrow, located mainly at the base of the plant, upper surfaces shiny and ribbed, lower surfaces dull

**Ligule:** Membranous, squarish on the tops, no auricles

**Other:** Seed heads resembles Timothy, plants have short rhizomes

Timothy

*Phleum pratense*

## Timothy *Phleum pratense*

Perennial grass Cool season  
Bunch grass Grows 2 to 3 feet  
tall

**Sheath:** Round, open and overlapping

**Blade:** Rolled in the bud shoot, flat, up to 1/4-inch wide, often twisted

**Ligule:** Large, membranous, with notch at either side

**Other:** Each stem grows from a distinctive swollen base

Alfalfa

*Medicago sativa*

## Alfalfa *Medicago sativa*

Perennial Legume Growth occurs from crowns Grows 2 to 3 feet tall

**Leaf:** Usually three leaflets with terminal leaflet on small stem; 1/3 of leaflet is toothed

**Flower:** Purple



Red clover

*Trifolium pratense*

## Red clover *Trifolium pratense*

Biennial or short lived perennial legume Growth is from crows; tufted appearance Grows 18 to 30 inches tall

**Leaf:** Three leaflets all equal distance from petiole, light colored V marks present on upper leaf surface, not shiny underneath

**Flower:** Rose red color

**Other:** Vegetative parts usually covered with many hairs, does not have stolons



## Subterranean Clover *Trifolium subterraneum*



## Subterranean Clover *Trifolium subterraneum*

A prostrate winter annual with slender creeping stems. Reaches a height of 6-15 inches. Often self seed in the fall for spring growth.

**Leaf:** Heart shaped. Palmately trifoliolate on long pubescent petioles. Leaflets pubescent on bottoms.



**Flower:** Typically whit or whit with pink veins.

**Other:** Stipules are broad with a short point and have distinctive veins and pinkish-purple coloration.

White Clover

*Trifolium repens*

## White clover *Trifolium repens*

Perennial legume Spreads by stolons Grows 6 to 12 inches tall

**Leaf:** Three leaflets all equal distance from petiole, light colored V marks present on upper leaf surface, shiny underneath

**Flower:** White to pinkish white

**Other:** No hairs on vegetative plant parts

**Alsike clover**  
*Trifolium hybridum*

Perennial short lived legume  
 Growth from a crown with  
 multiple stems Grows 12 to  
 24 inches tall

**Leaf:** Three leaflets all  
 equal distance from petiole,  
 no light marks present on  
 upper leaf surface, not shiny  
 underneath

**Flower:** White to rose

**Other:** No hairs on vegeta-  
 tive parts



**Birdsfoot trefoil*****Lotus corniculatus***

**Birdsfoot trefoil**  
***Lotus corniculatus***

Perennial legume Growth occurs from crowns but roots can also produce new growth  
Grows 12 to 18 inches tall

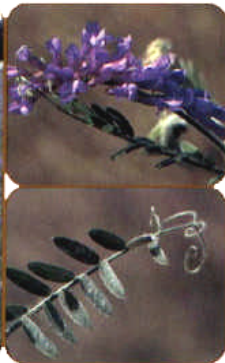
**Leaf:** 5 leaflets, 3 above and 2 below

**Flower:** Yellow to deep orange, tinged with red

**Other:** Inch-long seed pods resemble several toes of a bird's foot, thus plant's name



Hairy Vetch

*Vicia villosa*

## Hairy vetch

### *Vicia villosa*

Winter annual legume Usually planted in late summer for major growth the following year Grows 3 to 4 feet and attaches to other plants by tendrils

**Leaf:** Multiple leaflets arranged along the sides of a common stem ending in a tendril

**Flower:** Blue violet

**Other:** Vegetative parts are covered by small hairs



## Species List

Oats — <i>Avena sativa</i>	Page 7
Wheat — <i>Triticum aestivum</i>	Page 8
Cereal rye — <i>Secale cereale</i>	Page 9
Perennial ryegrass — <i>Lolium perenne</i>	Page 10
Orchardgrass — <i>Dactylis glomerata</i>	Page 11
Kentucky bluegrass — <i>Poa pratensis</i>	Page 12
Tall fescue — <i>Festuca arundinacea</i> *	Page 13
Annual ryegrass — <i>Lolium multiflorum</i>	Page 14
Smooth brome grass — <i>Bromus inermis</i> *	Page 15
Reed canarygrass — <i>Phalaris arundinacea</i> *	Page 16
Meadow foxtail — <i>Alopecurus pratensis</i>	Page 17
Timothy — <i>Phleum pretense</i>	Page 18
Alfalfa — <i>Medicago sativa</i>	Page 19
Red clover — <i>Trifolium pretense</i>	Page 20
Subterranean Clover — <i>Trifolium subterraneum</i>	Page 21
White clover — <i>Trifolium repens</i>	Page 22
Alsike clover — <i>Trifolium hybridum</i>	Page 23
Birdsfoot trefoil — <i>Lotus corniculatus</i>	Page 24
Hairy vetch — <i>Vicia villosa</i>	Page 25